

Symantec Endpoint Protection Download and Installation

The packages on the web include virus and spyware protection for 32 and 64 bit Microsoft Windows systems.

Minimum system requirements:

Intel Processor or compatible architecture (32 or 64 bit)

Memory: 256 MB of RAM or more

Hard Disk: 600 MB or more free

Windows Operating System (32 or 64 bit)

If you are not sure if you are using a 64 bit system or need information about your system:

Click the **START** button

Click **Control Panel**

Click **System**

Look for the system type

If 64 bit is not specified, use the 32 bit version

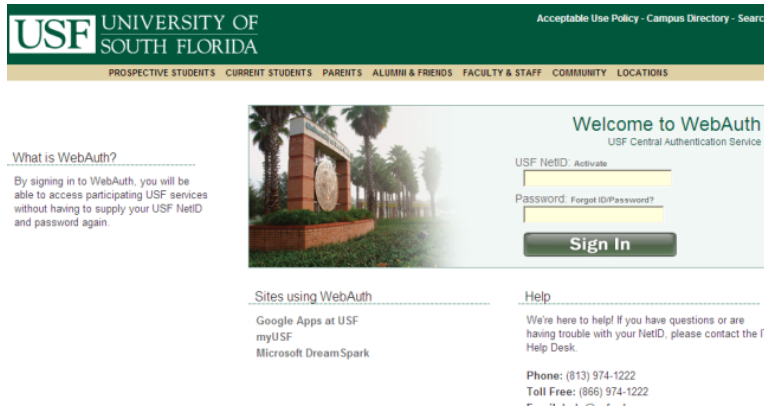
1. **PRINT** these directions so that they will be available throughout the install process as you disconnect from the internet.
2. **Go to** <http://it.usf.edu/purchasing/security/symantec>
3. **Click** on the link appropriate for your computer:

Symantec AV & Spyware (32 bit) Downloads the file: USF Home AV_AS 32bit.exe

Symantec AV & Spyware (64 bit) Downloads the file: USF Home AV_AS 64bit.exe

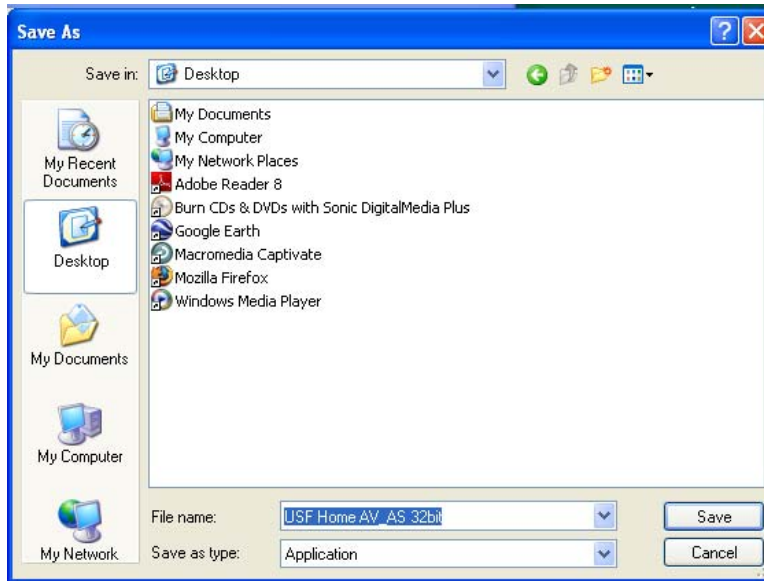
The screenshot shows the Symantec Downloads page on the USF Information Technology website. The page header includes the USF logo and 'Information Technology'. The navigation menu includes Home, Email, Services, Getting Connected, Purchasing & Software, Policies, Classroom Technology, Business Systems, and Help. The main content area is titled 'Symantec' and includes a breadcrumb trail: Home > Purchasing & Software > Security Downloads > Symantec. The page is written by 'eplice' on Friday, 24 April 2009 10:24. Under the 'Symantec Downloads' section, there is a blue warning box stating: 'These downloads are the non-managed builds. They are designed for at-home use, NOT for USF-owned machines.' Below this, there are two download links: 'Symantec AV & Spyware (32bit)' and 'Symantec AV & Spyware (64bit)'. The page is last updated on Friday, 24 April 2009 12:34. On the left side, there is a 'Quick Links' section with links for Student Email Login, Faculty/Staff Email Login, myUSF Login, eUSF Login, Get Connected, and System Events. Below that is a 'Need Help?' section with contact information for the IT Help Desk: Phone: (813) 974-1222, Toll Free: (866) 974-1222, and Email: help@usf.edu.

4. **Log on** with your NetID and password.



Don't have a NetID? Go to <http://netid.usf.edu> to activate your NetID.

5. **Save** the file to your desktop.



When the file has finished downloading:

6. **You are about to remove all existing anti-virus software from your computer which will leave your computer vulnerable to virus attacks.**

Information Technology highly recommends that you disconnect your computer from the internet before continuing. In order to disconnect your computer from the internet you may need to disable the wireless connection on the computer, unplug the network cable from the computer, turn off the wireless router, or possibly turn off the cable modem. **If you are not comfortable disabling your internet connection** or if you do not know how, you may leave your connection active and proceed with **Step 7** below, but be aware that your system will be vulnerable to virus attacks during the installation process.

7. **Remove** any existing anti-virus or anti-spyware protection currently installed including McAfee, older versions of Norton or Symantec, Spybot, Spyware Guard, etc.

Symantec EndPoint Protection provides both anti-virus and anti-spyware protection.

8. **Reboot** the computer after you have removed the existing anti-virus and anti-spyware software.

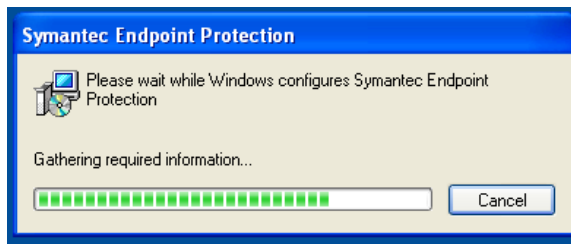
After the computer restarts

9. **Double-click** on the Symantec file you downloaded earlier to your desktop.

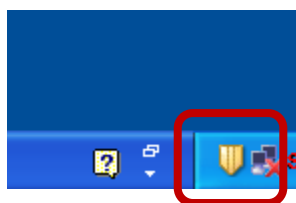


The Symantec installer will begin. This will take some time.

You will see a variety of progress bars as the software is loading that will **disappear** as the installer nears completion.

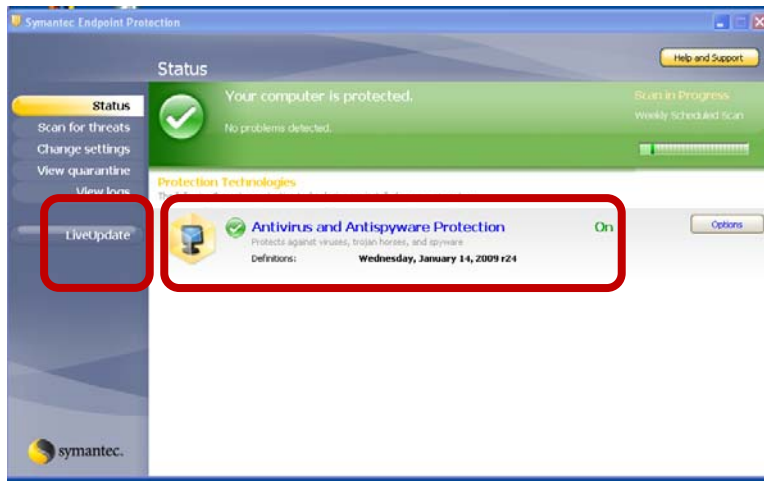


A **yellow shield** will appear in the lower right-hand side of the screen in the system tray. This indicates that the software has finished loading.



10. **Double-click** on the shield to open **Symantec Endpoint Protection**.

Notice that the date of the current Definitions: is not current.



11. **Re-Connect** your computer to the internet if you disconnected it earlier.

12. **Click** the **LiveUpdate** button on the left side of the **Symantec Endpoint Protection** screen.

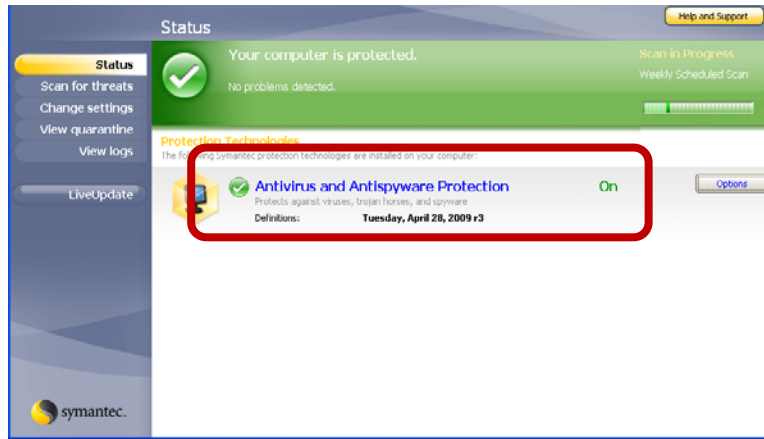
A screen will open showing the update progress.



After LiveUpdate is complete

13. **Verify** the new date in the Definitions: section.

The date shown should be within a few days of the current date.



14. IT recommends that you run a full scan on your system after installing **Symantec Endpoint Protection** and at least once a week thereafter. It is best to schedule the full scan during a time when you will not be using your computer as the scan can be very resource intensive.

To run and/or schedule a full scan, **Click** the **Scan for Threats** button on the left side of the **Symantec Endpoint Protection** screen.

15. **Close** the **Symantec Endpoint Protection** screen.